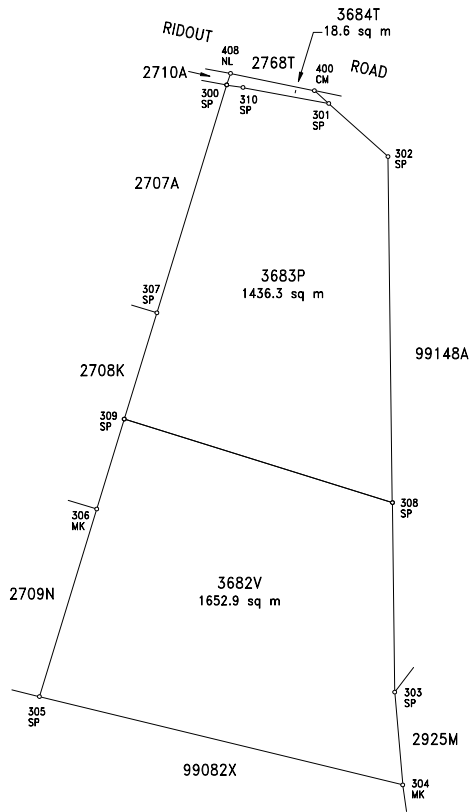


LOT NO		ON PLAN	HERE SUBDIVDED INTO LOTS
OLD FORMAT	NEW FORMAT		
122-24	99147T	9406	3682V to 3684T

N.32150
E.25000

STATION NO	NORTHING	EASTING
300	32111.392	25088.887
301	32108.895	25102.644
302	32101.746	25110.626
303	32029.502	25111.541
304	32017.012	25112.637
305	32028.894	25063.650
306	32054.200	25071.362
307	32080.664	25079.471
308	32055.066	25111.217
309	32066.322	25075.076
310	32111.054	25091.060
400	32110.639	25100.697
408	32112.953	25089.389



N.32150
E.25000

N.32150
E.25000

N.32000
E.25150

All coordinates shown are based on SVY 21 Datum Surveyed by FAUZAN 18.06.2008 Compiled from Sketch Plans SK82167-001 to 006 Plans (9A) in SLA/LPR/123.1.69 , (10A) in SLA/LPR/123.1.69 Cadastral Map : 1944	Drawn by <i>SHERMAN</i> 30.06.2008	I, CHIA AIK KOK, a surveyor registered under the Land Surveyors Act (Cap.156), certify that this document has been prepared by me or under my immediate supervision, in accordance with the Boundaries and Survey Maps (Conduct of Cadastral Surveys) Rules 2005 (G.N. No. S 155/2005). 30.06.2008 Registered Surveyor (Digitally Signed)	Approved SOH KHENG PENG Chief Surveyor (Digitally signed)	
	Examined by <i>PANS</i> 30.06.2008			
	SVY 3631-2008			
	Scale 1 : 500			
	MUKIM NO. 2			
		82167		